



Welcome! Bienvenidos!

Tobacco, COVID-19 & Substance Abuse



AGENDA

Thursday, September 17th, 2020

5:30 to 6 pm ~

Hosted by Hispanic Tobacco Prevention Network of WI, City of MKE Tobacco-Free Alliance

Guests: Darcie Warren, American Lung Association & Maria Perez, Sixteenth Street Community Health Centers

Community Education & Guest Speakers

- 5:30 – 5:34pm – Welcome and Overview of Tobacco Use in Hispanic Community (Crystal Landeros, HTPN)
- 5:34 – 5:38pm – Overview of COVID-19 and Smoking (Darcie Warren, American Lung Association)
- 5:38 - 5:42pm – Overview of Substance Abuse in the Hispanic Community (Maria Perez, Sixteenth Street)

Legislative Candidate Forum Presentations

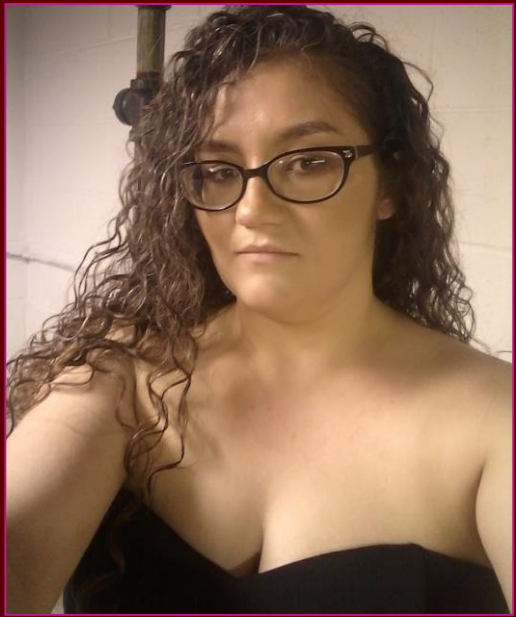
- 5:42 – 5:44pm - Moderator reviews format, and introduces candidates
- 5:44 – 5:48pm - Candidates have two minutes of introduction time

Open forum - Q&A on community issues

- 5:48 – 5:58pm - Moderator reads from questions submitted via Google Form by audience
- § Candidates have one minute to respond to questions
- § 2 questions related to tobacco prevention (x2 responses)
- § 3 questions from the audience related to COVID-19 or Substance Abuse (x2 responses)
- 5:58 – 6:00pm - **Closing comments**
- 6:00pm – **Conclusion and thanks**



MEET YOUR HOSTS



Crystal S. Landeros

Bilingual Tobacco Prevention
Coordinator

Scott Wisdom

Harm Reduction Specialist

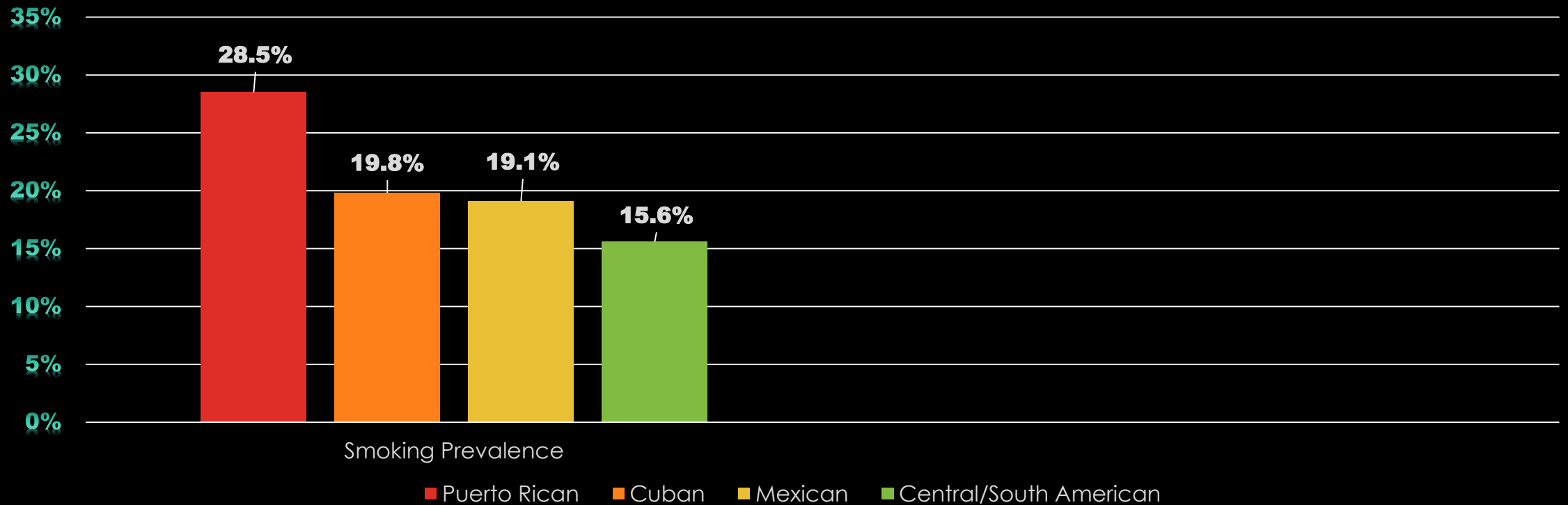


Anneke Mohr

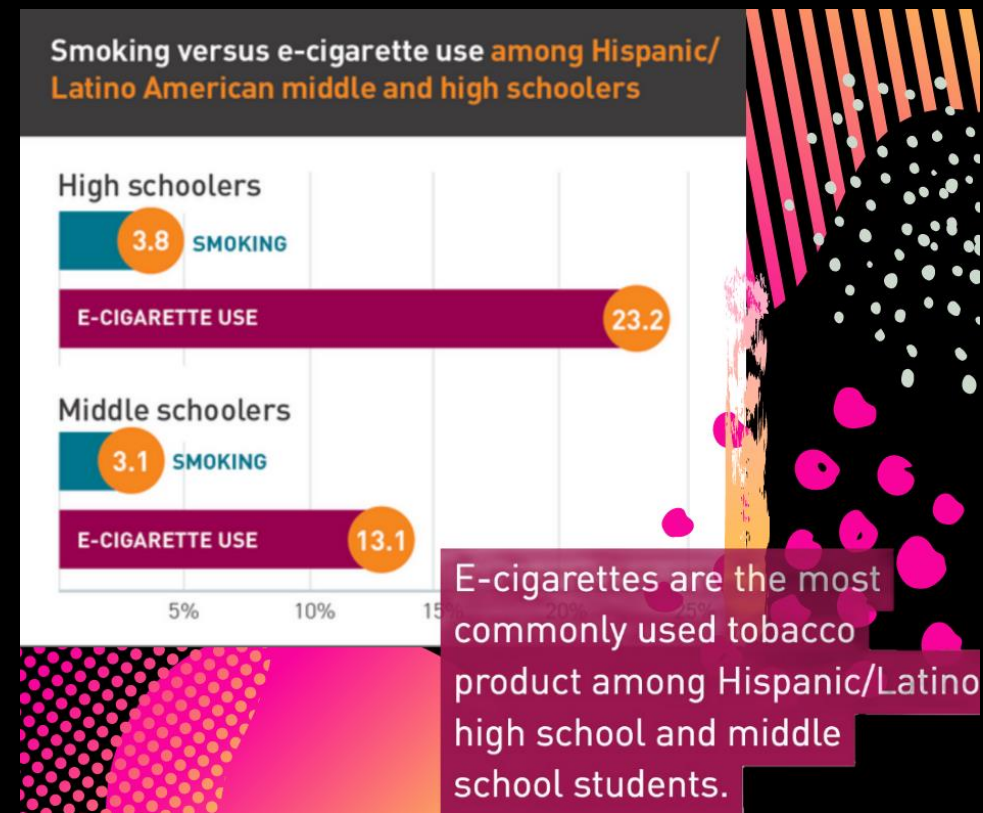
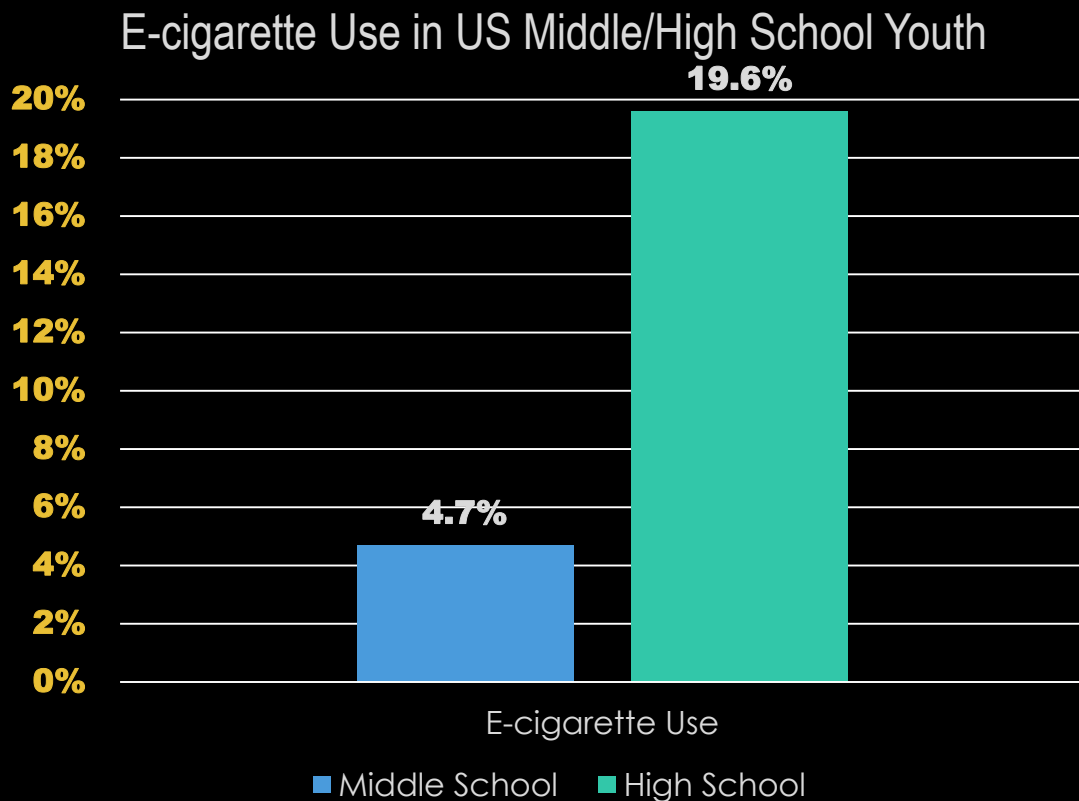
Coalition Coordinator

CIGARETTE SMOKING IN HISPANICS

Smoking Prevalence of Hispanic Subgroups in the US



E-CIGARETTES USE AMONG US YOUTH



Truth Initiative. (2020). Wang TW, Neff LJ, Park-Lee E, Ren C, Cullen KA, King BA. E-cigarette Use Among Middle and High School Students — United States, 2020. MMWR Morb Mortal Wkly Rep. ePub: 9 September 2020. DOI: <http://dx.doi.org/10.15585/mmwr.mm6937e1external icon>.

Truth Initiative. (2020). Tobacco use in the Hispanic/Latino American Community. TruthInitiative.org. <https://truthinitiative.org/research-resources/targeted-communities/tobacco-use-hispaniclatino-american-community>

Did you know?



Disposable use has gone up **1000%** amongst youth in the last year!

Truth Initiative. (2020). New federal data: Flavored e-cigarettes continue to drive youth vaping epidemic, with disposable use up 1,000% among high schoolers. TruthInitiative.org. <https://truthinitiative.org/research-resources/emerging-tobacco-products/new-federal-data-flavored-e-cigarettes-continue-drive>



Picture courtesy of Google®. Greenfield Bilingual School. Milwaukee, WI.



This Photo by Unknown Author is licensed under [CC BY-SA-NC](#)

There are **3x more** tobacco retailers within **500 feet** of schools in the **53204 & 53215** zip codes than in surrounding zip codes in MKE?

Data collected in MKE from 2016-2019 by MKE Collaborative Project funded by WI TPCP.

CONTACT INFORMATION

Crystal S. Landeros

Bilingual Tobacco Prevention
Coordinator

UMOS Health Promotions

2701 S. Chase Ave.

Suite E, Back of Building

Milwaukee, WI 53207

414-389-6501

Crystal.Landeros@umos.org

Scott Wisdom

Harm Reduction Specialist

UMOS Health Promotions

2701 S. Chase Ave.

Suite E, Back of Building

Milwaukee, WI 53207

414-389-6504

Scott.Wisdom@umos.org

Anneke Mohr

Coalition Coordinator

Community Advocates Public Policy
Institute

728 N. James Lovell

Milwaukee, WI 53233

414-270-2948

amohr@communityadvocates.net

RESOURCES

<https://tobaccofreeca.com/story-of-inequity/hispanic-latino/>

<https://www.cdc.gov/tobacco/campaign/tips/resources/data/cigarette-smoking-in-united-states.html#populations>

<https://truthinitiative.org/research-resources/targeted-communities/tobacco-use-hispaniclatino-american-community>

<https://truthinitiative.org/research-resources/quitting-smoking-vaping/how-quit-vaping-or-help-someone-quit-during-coronaviruss>

<https://truthinitiative.org/research-resources/emerging-tobacco-products/new-federal-data-flavored-e-cigarettes-continue-drivee>

<https://county.milwaukee.gov/EN/COVID-19>

<https://tools.cdc.gov/medialibrary/index.aspx#/media/id/402672>

<https://tools.cdc.gov/medialibrary/index.aspx#/media/id/234506>

COVID-19 and Tobacco

Darcie K.G. Warren, MPA

Coordinator, Partnership for a Tobacco Free Wisconsin
Training and Technical Assistance Provider

American Lung Association Manager | Health Promotions
– Tobacco Control, Advocacy and Public Policy

Join Us! Tobacco Prevention Coalition

- 1 Stay informed.
- 2 Receive email alerts.
- 3 To sign up, visit:
<https://www.tobaccofreewisconsin.org>

NAME *

First

Last

ORGANIZATION

ADDRESS *

Line 1

Line 2

City

State

Zip Code

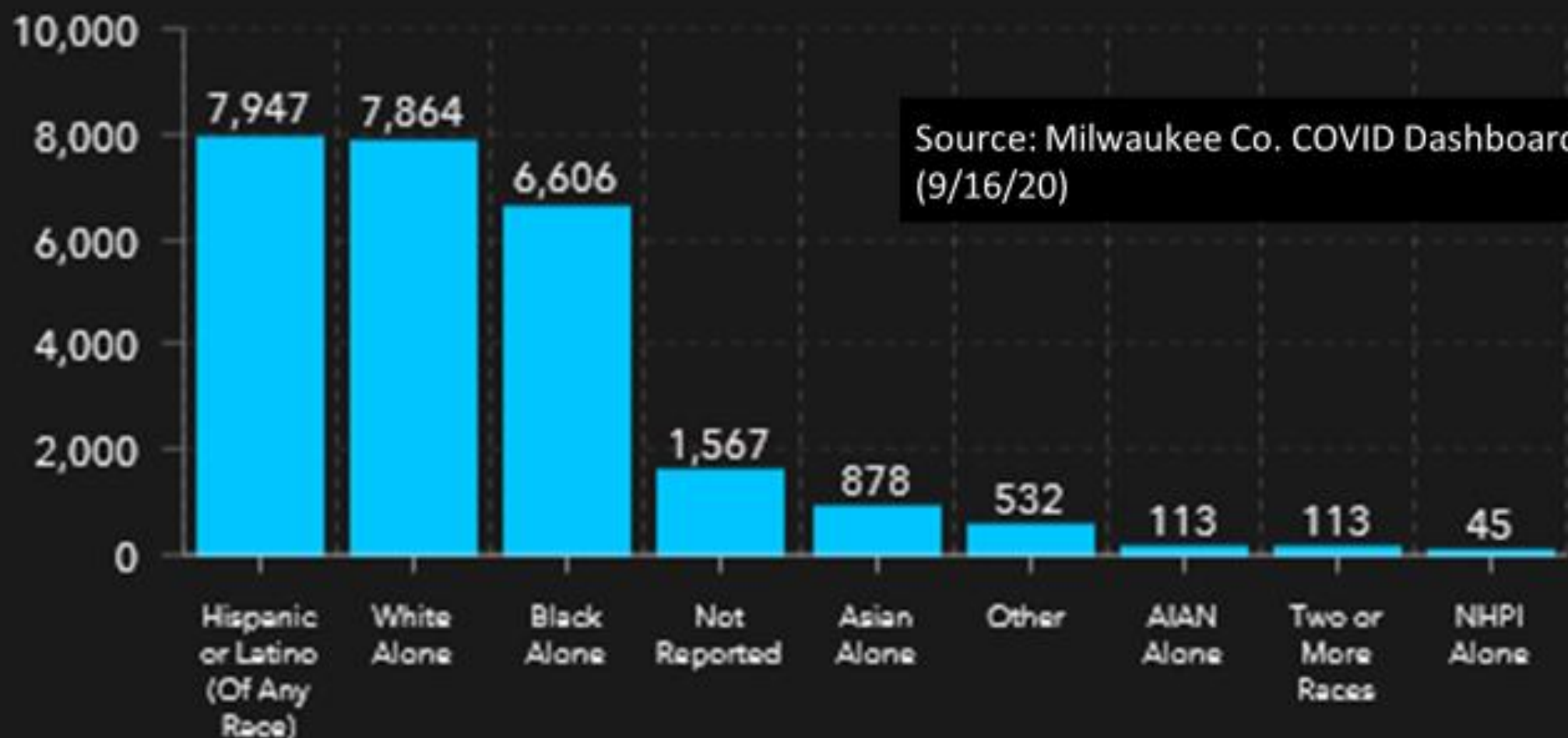
Country

EMAIL *

PHONE NUMBER

TELL US ABOUT YOUR TOBACCO CONTROL INTERESTS *

Confirmed Case Count by Race/Ethnicity ³



Race/Ethnicity

Age Range

Gender

City

Demographics

Attention:

Smoking and COVID-19



People with smoking-related chronic medical conditions like heart disease, diabetes, and lung disease are at **greater risk** for getting seriously ill from COVID-19.

Free quit services are available for all Wisconsinites by calling the Wisconsin Tobacco Quit Line.

W I S C O N S I N T O B A C C O
QuitLine
800-QUIT-NOW

Atención: Fumar y el COVID-19



Personas con condiciones médicas crónicas relacionados con fumar tales como enfermedades del corazón, la diabetes, y condiciones pulmonares están a mayor riesgo de enfermarse severamente del COVID-19.

Servicios gratuitos para dejarlo ya están disponibles para residentes de Wisconsin llamando a la Línea de Déjelo Ya.

WISCONSIN TOBACCO
QuitLine
800-QUIT-NOW

Se Habla Español
1-855-DÉJELO-YA

Young people who
ever used **e-cigarettes**

5x

more likely to be
diagnosed with COVID-19

Young people who
ever used **e-cigarettes plus
conventional cigarettes**

7x

more likely to be
diagnosed with COVID-19



ELSEVIER

JOURNAL OF
ADOLESCENT
HEALTH

www.jahonline.org

Original article

Association Between Youth Smoking, Electronic Cigarette Use,
and Coronavirus Disease 2019

Shivani Mathur Gaiha, Ph.D.^a, Jing Cheng, Ph.D.^b, and Bonnie Halpern-Felsher, Ph.D.^{a,*}

^aDivision of Adolescent Medicine, Department of Pediatrics, Stanford University, Palo Alto, California

^bDivision of Oral Epidemiology and Dental Public Health, University of California, San Francisco, San Francisco, California

Obstacles like **poverty and discrimination** **increase rates of commercial tobacco use**. This leads to poorer health outcomes for those with fewer resources and less power in society.



Communities of color are a key target of the tobacco industry.

Tobacco retailers in Milwaukee's African American and Latinx neighborhoods are **more likely to sell cheaper tobacco products** than in White neighborhoods.

Milwaukee retailers in African American and Latinx neighborhoods **more often display cigarettes at a child's eye level and near candy** than in White neighborhoods.

African American neighborhoods often have **more outdoor advertisements of menthol cigarettes** than their White and Latinx neighbors.



Contact me with questions.

Darcie K.G. Warren, MPA

Coordinator, Partnership for a Tobacco Free Wisconsin

American Lung Association Manager | Health Promotions

– Tobacco Control, Advocacy and Public Policy

Email: darcie.warren@lung.org

Overview of Substance Abuse in the Hispanic Community

Maria Perez, Sixteenth Street

Legislative Candidate Forum Presentations

Moderator to review format and introduce candidates

Candidates have two minutes of introduction time

Open forum - Q&A on community issues

Moderator to read from questions submitted by audience

Candidates have one minute to respond to questions

Question 1

In Wisconsin, licensed tobacco retailers must provide employees with standard sales training, they must purchase tobacco from permitted distributors, and they must obey tax laws. State statute doesn't classify vape shops as tobacco retailers so they operate without a license. Vape retailers don't have to follow the same rules as tobacco retailers.

What is one concrete step the legislature can take to ensure vape retailers follow the same rules as other tobacco retailers?

Question 2

Wisconsin's Tobacco Prevention and Control Program is funded at only less than one-tenth of what's recommended by the Centers for Disease Control and Prevention. Smoking causes cancer, lung disease, and heart disease, which increase risk for severe illness from COVID-19.

Do you think it should be a budgetary priority to maintain or even increase tobacco prevention and control funding?

Question 3

How do you think the opiate crisis in Milwaukee should be addressed?

Question 4

What plans do you have to help improve behavioral health within our Hispanic Community?

Closing Comments

Candidates have 1 minute each

Conclusion and Thanks

Don't forget to vote November 3rd!

Go to:

myvote.wi.gov

See if you are registered, request an absentee ballot, register to vote, even track your absentee ballot and confirm that it has been counted.

For rent assistance, go to:

<https://communityadvocates.net/what-we-do/rent-assistance.html>