



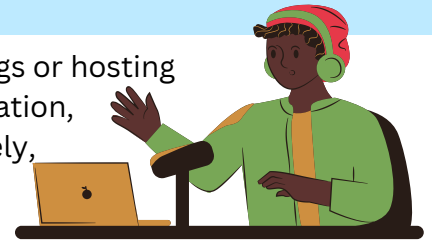
# Strategic Prevention Framework-Partnerships for Success

Community Advocates Public Policy Institute's Strategic Prevention Framework-Partnerships for Success project (PFS) aims to deliver evidence-based strategies to prevent youth use of alcohol, marijuana, and e-cigarettes; to decrease behavioral health disparities; and to boost protective factors and youth mental health wellness in Milwaukee County.

PFS partners are the Cudahy Health Department, Greendale Health Department, RISE Drug Free MKE, Oak Creek Health Department, Volition Franklin, and West Allis West Milwaukee Heroin/Opiate Task Force.

## Our 2022 Impact

**Partners developed their professional skills** by attending trainings or hosting Mental Health First Aid, suicide prevention, drug identification, trauma and substance use, using social media effectively, and Substance Abuse Prevention Skills Training.



Organizations completed retail assessments of a sample of stores across our communities to **assess alcohol and tobacco retailers selling practices that target youth.**

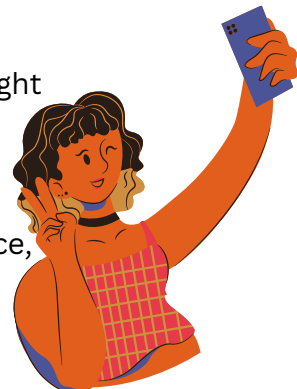
Partnered on a **Discover Wellness event** focused on the eight areas of wellness –emotional, physical, occupational, intellectual, financial, social, environmental, and spiritual—to provide education, resources, and access to services.

Facilitated the implementation of **15 Botvin LifeSkills Trainings to 400 elementary students** by Neu-Life Community Development, The Parenting Network, and West Allis-West Milwaukee Family Resource Center.

Conducted outreach at nine high school football games via My24's Friday Night Rivals series. **TV interviews with coalition partners reached an estimated audience of 203,000.**



Greendale Health Department, Greendale-Hales Corners Community Alliance, and Martin Luther High School collaborated to bring Philip Chard, a psychotherapist and speaker, to present to 600 high school students on **adolescents' use of social media and its impact on mental health.**



Community Advocates Public Policy Institute  
[ppi.communityadvocates.net](http://ppi.communityadvocates.net)

