

# Mental Health Awareness Training

Community Advocates Public Policy Institute has developed a niche as a provider of unique, interactive, and enlightening learning opportunities on mental health, substance use, trauma, and suicide prevention to community members, human services professionals, and organizations.

In 2021 CA-PPI was awarded a five-year Mental Health Awareness Training grant to provide culturally appropriate workshops to help close behavioral health disparities in Milwaukee County.

## Our 2022 Impact

### 61 Workshops Conducted

29 Mental Health First Aid

18 QPR Suicide Prevention

12 Verbal De-Escalation Techniques

2 Mindful Gratitude Sessions

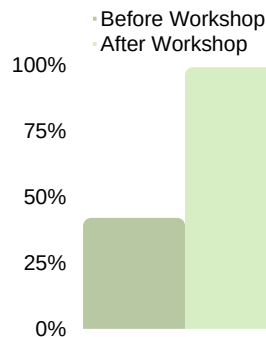
### 482 people trained

76.8% Social Services Providers

23.2% Community Members



Most common skill acquired via workshops:  
*listening nonjudgmentally*



Knew what steps to take if someone is experiencing mental health or substance use challenges



Knew what steps to take if someone is at risk for death by suicide

# 2,198

Resources provided

# 2,013

Mental Health & Wellness Resource Guides distributed

# 185

Referrals made to mental health or related services



Community Advocates Public Policy Institute

[ppi.communityadvocates.net](http://ppi.communityadvocates.net)





# Stronger Families Milwaukee

The Stronger Families Milwaukee program is a five-year prevention initiative aimed at reducing child maltreatment and keeping more families within their homes. This bilingual English/Spanish family-centered, strengths-based program utilizes case management services and peer advocates to assist families in finding local supports that help them thrive in-home.

## Our Partners

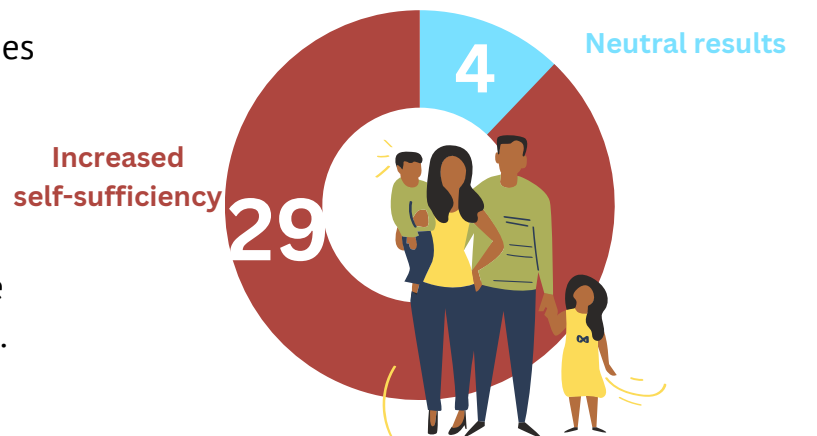
Community Advocates Public Policy Institute serves as the lead agency for the Stronger Families Milwaukee Consortium, along with partners Neu-Life Community Development and The Parenting Network.

The consortium launched Stronger Families Milwaukee in April 2022 with support from the Wisconsin Department of Children and Families.

**“She was just there to have your back, whatever you needed”**

—SFM participant on her Engagement Specialist’s help

## Our 2022 Impact



*Most pressing concern in household: Housing*



**Community Advocates  
Public Policy Institute**

[ppi.communityadvocates.net](http://ppi.communityadvocates.net)

