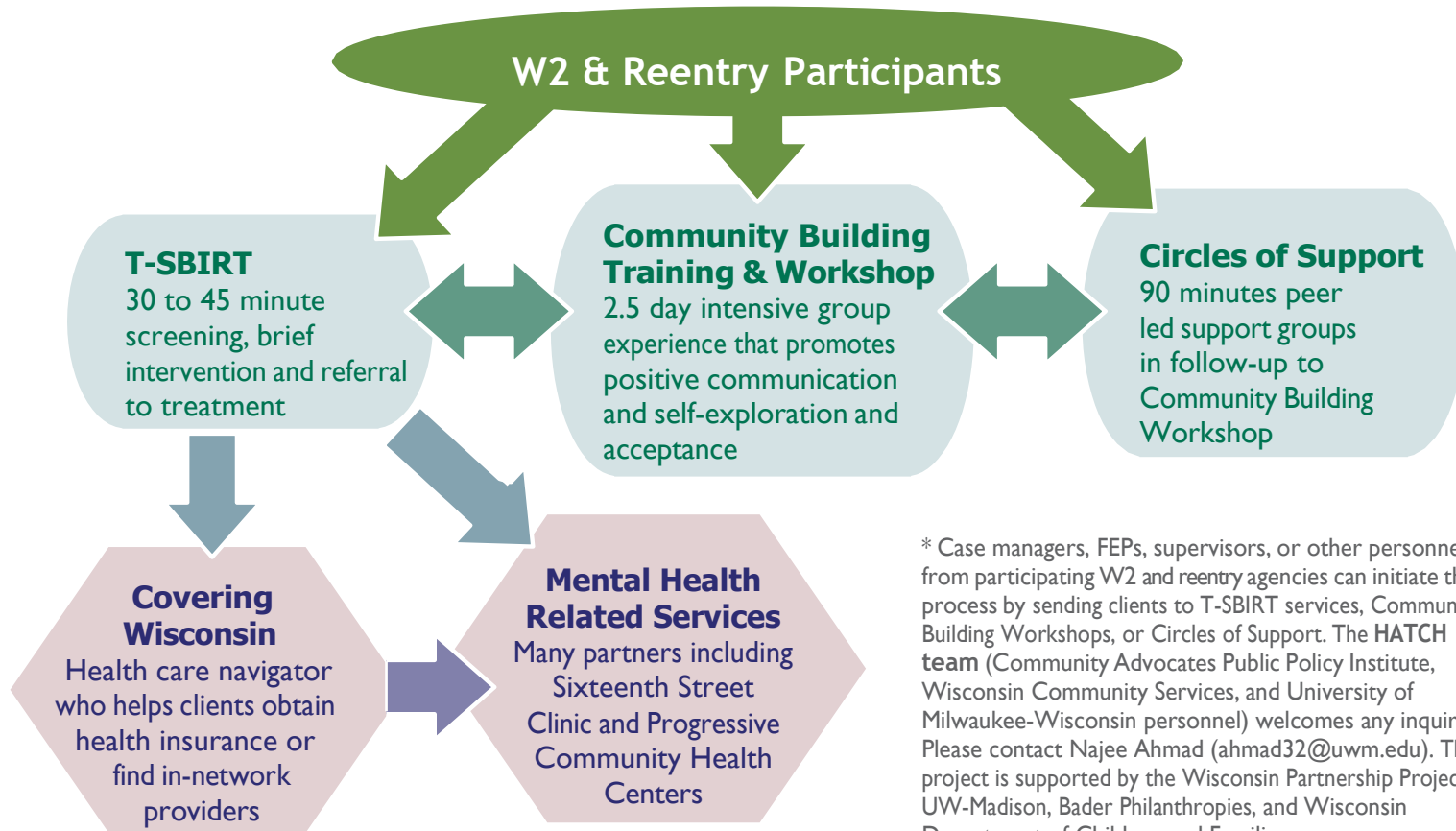


HATCH: Healing Adversity & Trauma through Conversation & Hope Participant Flow for W2 and Reentry Participants*



* Case managers, FEPs, supervisors, or other personnel from participating W2 and reentry agencies can initiate the process by sending clients to T-SBIRT services, Community Building Workshops, or Circles of Support. The **HATCH team** (Community Advocates Public Policy Institute, Wisconsin Community Services, and University of Milwaukee-Wisconsin personnel) welcomes any inquiries. Please contact Najee Ahmad (ahmad32@uwm.edu). The project is supported by the Wisconsin Partnership Project at UW-Madison, Bader Philanthropies, and Wisconsin Department of Children and Families.